

Bar Furniture

Endless possibilities



GASTRO

WHY CHOOSE US?

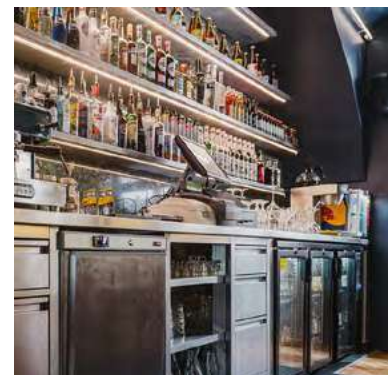
Since the beginning of our activity in gastronomy we have been designing workplaces trying to optimise them in a way they are as efficiently as possible. In case of gastronomic trailers or mobile carts it is extremely important due to limited space. Bars are another places where an arrangement has a great influence on work quality as well as efficiency.

Our offer includes standard bar modules, with which the arrangement of the whole bar becomes simple, repeatable and, if necessary, easy to change.

We design complete bars for places such as restaurants, cafes, clubs, or petrol stations individually for every project. Our wide experience, which may be confirmed by our reference book, let us meet our customers' needs, requirements, and budgets.

As a complement for our bars we offer full range of devices such as blenders, coffee machines, or ice machines. In the catalogue we present trusted producers of those devices.

We hope that our offer let You become familiar with the theme of optimising a bar and help You with selecting the right one-yours.



Isolated bath with speed rack and shelf



- Edge height **40 mm**
- Distance from edge to legs **100mm**
- Thickness of the worktop and lower shelf **40 mm**
- Height of the lower shelf from the ground **140 mm**
- Isolated bath, **250 mm deep**

	Code	Name	Dimensions (mm)	Price (EUR)
1	WI80	Isolated bath with speed rack and shelf	800 x 700 x 900 h	1 650.00
2	WI100	Isolated bath with speed rack and shelf	1000 x 700 x 900 h	1 870.00

Table with a 1-bowl sink, sprinkler, cutting board, waste hole and pull-out basket



- Edge height **40 mm**
- Distance from edge to legs **100mm**
- Worktop thickness **40 mm**
- Dimensions of the sink (mm) **300x330x150 h**
- Cutting board dimensions (mm) **390x180x20 h**
- Basket dimensions (mm) **285x435x370 h**
- Mug sprinkler in the bowl of sink

	Code	Name	Dimensions (mm)	Price (EUR)
1	ST1ZL	A table with a 1-bowl sink, sprinkler, cutting board, waste hole and pull-out basket	400 x 700 x 900 h	970.00
9	INEZ25	Battery		40.00
10	MC1P	Single siphon		19.00



- Edge height **40 mm**
- Distance from edge to legs **100mm**
- Worktop thickness **40 mm**
- Basket dimensions (mm) **285x435x370 h**
- Cross tube in the drawer as a coffee grounds knocker

	Code	Name	Dimensions (mm)	Price (EUR)
1	ST1SZ	Table with drawer for removing coffee grounds and a pull-out basket	400 x 700 x 900 h	820.00



- Edge height **40 mm**
- Distance from edge to legs **100mm**
- Worktop thickness **40 mm**

	Code	Name	Dimensions (mm)	Price (EUR)
1	ST80	Table without a shelf	800 x 700 x 900 h	320.00
2	ST90	Table without a shelf	900 x 700 x 900 h	340.00
3	ST100	Table without a shelf	1000 x 700 x 900 h	360.00
4	ST110	Table without a shelf	1100 x 700 x 900 h	380.00
5	ST120	Table without a shelf	1200 x 700 x 900 h	400.00
6	ST130	Table without a shelf	1300 x 700 x 900 h	420.00
7	ST140	Table without a shelf	1400 x 700 x 900 h	440.00
8	ST150	Table without a shelf	1500 x 700 x 900 h	460.00

Table with a shelf



- Edge height **40 mm**
- Distance from edge to legs **100mm**
- Thickness of the worktop and lower shelf **40 mm**
- Height of the lower shelf from the ground **140 mm**

	Code	Name	Dimensions (mm)	Price (EUR)
1	STP80	Table with a shelf	800 x 700 x 900 h	360.00
2	STP90	Table with a shelf	900 x 700 x 900 h	380.00
3	STP100	Table with a shelf	1000 x 700 x 900 h	400.00
4	STP110	Table with a shelf	1100 x 700 x 900 h	420.00
5	STP120	Table with a shelf	1200 x 700 x 900 h	440.00
6	STP130	Table with a shelf	1300 x 700 x 900 h	460.00
7	STP140	Table with a shelf	1400 x 700 x 900 h	480.00
8	STP150	Table with a shelf	1500 x 700 x 900 h	500.00

Table with a 2 shelves



- Edge height **40 mm**
- Distance from edge to legs **100mm**
- Thickness of the worktop and lower shelf **40 mm**
- Height of the lower shelf from the ground **140 mm**

	Code	Name	Dimensions (mm)	Price (EUR)
1	ST2P80	Table with a 2 shelves	800 x 700 x 900 h	440.00
2	ST2P90	Table with a 2 shelves	900 x 700 x 900 h	470.00
3	ST2P100	Table with a 2 shelves	1000 x 700 x 900 h	500.00
4	ST2P110	Table with a 2 shelves	1100 x 700 x 900 h	530.00
5	ST2P120	Table with a 2 shelves	1200 x 700 x 900 h	560.00
6	ST2P130	Table with a 2 shelves	1300 x 700 x 900 h	590.00
7	ST2P140	Table with a 2 shelves	1400 x 700 x 900 h	620.00
8	ST2P150	Table with a 2 shelves	1500 x 700 x 900 h	650.00

A table with a 1-bowl sink



- Edge height **40 mm**
- Distance from edge to legs **100mm**
- Worktop thickness **40 mm**
- Dimensions of the sink (mm) **400x400x250 h**

	Code	Name	Dimensions (mm)	Price (EUR)
1	ST1ZL80	A table with a 1-bowl sink	800 x 700 x 900 h	510.00
2	ST1ZL90	A table with a 1-bowl sink	900 x 700 x 900 h	530.00
3	ST1ZL100	A table with a 1-bowl sink	1000 x 700 x 900 h	550.00
4	ST1ZL110	A table with a 1-bowl sink	1100 x 700 x 900 h	570.00
5	ST1ZL120	A table with a 1-bowl sink	1200 x 700 x 900 h	590.00
6	ST1ZL130	A table with a 1-bowl sink	1300 x 700 x 900 h	610.00
7	ST1ZL140	A table with a 1-bowl sink	1400 x 700 x 900 h	630.00
8	ST1ZL150	A table with a 1-bowl sink	1500 x 700 x 900 h	650.00
9	INEZ25	Battery		40.00
10	MC1P	Single siphon		19.00

A table with a 1-bowl sink and a shelf



- Edge height **40 mm**
- Distance from edge to legs **100mm**
- Thickness of the worktop and lower shelf **40 mm**
- Height of the lower shelf from the ground **140 mm**
- Dimensions of the sink (mm) **400x400x250 h**

	Code	Name	Dimensions (mm)	Price (EUR)
1	STP1ZL80	A table with a 1-bowl sink and a shelf	800 x 700 x 900 h	570.00
2	STP1ZL90	A table with a 1-bowl sink and a shelf	900 x 700 x 900 h	600.00
3	STP1ZL100	A table with a 1-bowl sink and a shelf	1000 x 700 x 900 h	630.00
4	STP1ZL110	A table with a 1-bowl sink and a shelf	1100 x 700 x 900 h	660.00
5	STP1ZL120	A table with a 1-bowl sink and a shelf	1200 x 700 x 900 h	690.00
6	STP1ZL130	A table with a 1-bowl sink and a shelf	1300 x 700 x 900 h	720.00
7	STP1ZL140	A table with a 1-bowl sink and a shelf	1400 x 700 x 900 h	750.00
8	STP1ZL150	A table with a 1-bowl sink and a shelf	1500 x 700 x 900 h	780.00
9	INEZ25	Battery		40.00
10	MC1P	Single siphon		19.00

Cabinet with hinged doors



- Edge height **40 mm**
- Distance from edge to legs **100mm**
- Worktop thickness **40 mm**

	Code	Name	Dimensions (mm)	Price (EUR)
1	SZK80	Cabinet with hinged doors	800 x 700 x 900 h	790.00
2	SZK90	Cabinet with hinged doors	900 x 700 x 900 h	820.00
3	SZK100	Cabinet with hinged doors	1000 x 700 x 900 h	860.00
4	SZK110	Cabinet with hinged doors	1100 x 700 x 900 h	890.00
5	SZK120	Cabinet with hinged doors	1200 x 700 x 900 h	930.00
6	SZK130	Cabinet with hinged doors	1300 x 700 x 900 h	960.00
7	SZK140	Cabinet with hinged doors	1400 x 700 x 900 h	1 000.00
8	SZK150	Cabinet with hinged doors	1500 x 700 x 900 h	1 030.00

Cabinet with hinged doors and 2-shelves



- Edge height **40 mm**
- Distance from edge to legs **100mm**
- Thickness of the worktop and lower shelf **40 mm**
- Height of the lower shelf from the ground **140 mm**

	Code	Name	Dimensions (mm)	Price (EUR)
1	SZ2P80	Cabinet with hinged doors and 2-shelves	800 x 700 x 900 h	840.00
2	SZ2P90	Cabinet with hinged doors and 2-shelves	900 x 700 x 900 h	870.00
3	SZ2P100	Cabinet with hinged doors and 2-shelves	1000 x 700 x 900 h	910.00
4	SZ2P110	Cabinet with hinged doors and 2-shelves	1100 x 700 x 900 h	950.00
5	SZ2P120	Cabinet with hinged doors and 2-shelves	1200 x 700 x 900 h	990.00
6	SZ2P130	Cabinet with hinged doors and 2-shelves	1300 x 700 x 900 h	1 020.00
7	SZ2P140	Cabinet with hinged doors and 2-shelves	1400 x 700 x 900 h	1 060.00
8	SZ2P150	Cabinet with hinged doors and 2-shelves	1500 x 700 x 900 h	1 100.00



	Code	Name	Dimensions (mm)	Price (EUR)
1	WSP1180	Bracket for frontal construction and counter	1180 h	220.00



	Code	Name	Dimensions (mm)	Price (EUR)
1	OC300-1000	Drainer built into the worktop	300-1000 x 150 x 20 h	365.00
2	PRA240	Raised egde m/b	240 mm	65.00

Bar module for 2 refrigerators



	Code	Name	Dimensions (mm)	Price (EUR)
1	MBAR130	Bar module for 2 refrigerators	1300x900x1180 h	970.00
2	P600	Shelf	600x570x40 h	165.00

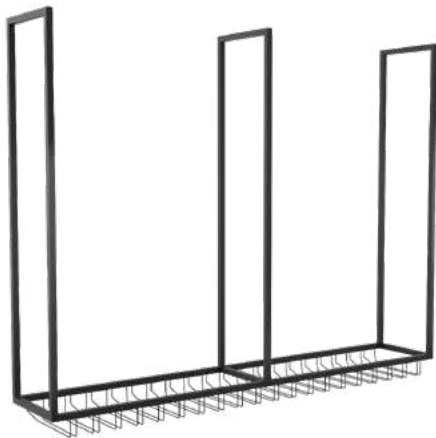
Bar module for 3 refrigerators



	Code	Name	Dimensions (mm)	Price (EUR)
1	MBAR1950	Bar module for 3 refrigerators	1950x900x1180 h	1 360.00
2	P1210	Shelf	1210x570x40 h	250.00



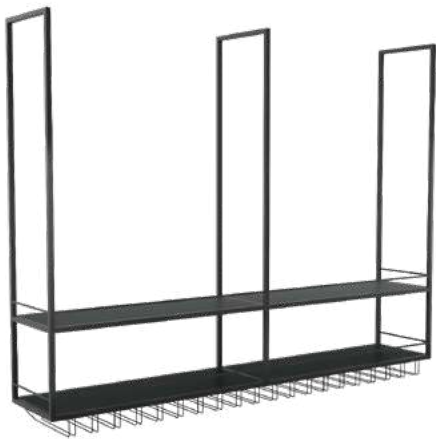
	Code	Name	Dimensions (mm)	Price (EUR)
1	MBARW2100	Bar module for 2 refrigerators with a bath and speed rack	2100x900x1180 h	2 900.00
2	P1210	Shelf	1210x570x40 h	250.00



1 Bar hanger without a shelf



2 Bar hanger with wooden shelves



3 Bar hanger with steel shelves

	Code	Name	Dimensions (mm)	Price (EUR)
1	WK200-1	Bar hanger without a shelf	2000x365x1500 h	750,00
2	WK200-2	Bar hanger with wooden shelves	2000x365x1500 h	1 150,00
3	WK200-3	Bar hanger with steel shelves	2000x365x1500 h	980,00

Examples of bar arrangements

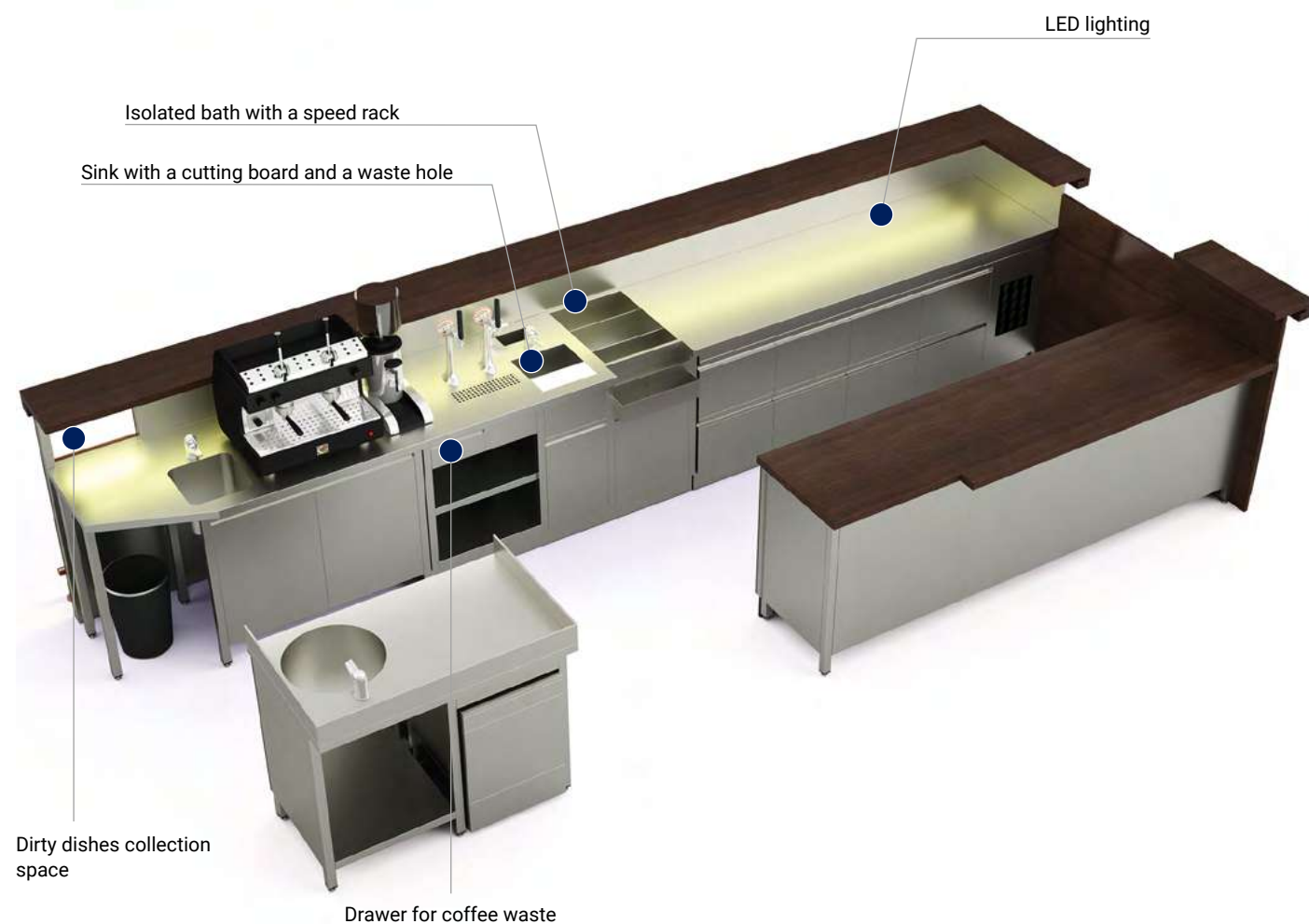


Mounting method Brackets



An exemplary arrangement of bar modules





WIERZYNEK

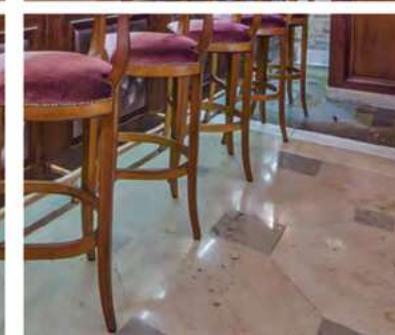
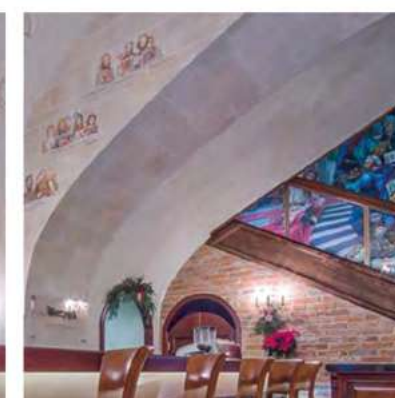
A bar in the heart of Cracow, in one of the most famous restaurant in Poland - Wierzynek.

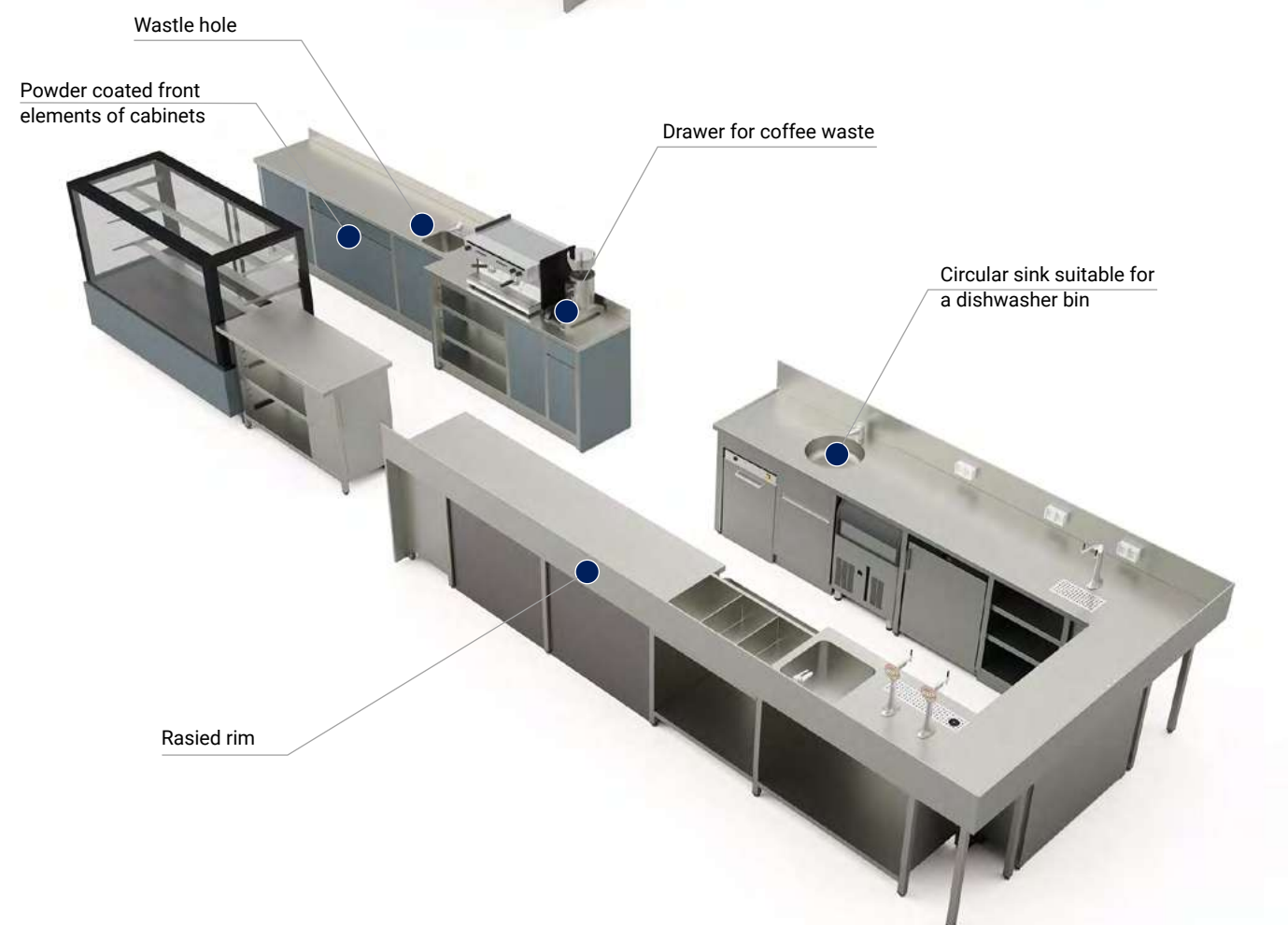
The bar was designed and produced by our company.

We provided our customer not only with devices and stainless steel furniture but also with wooden elements, frames, glass elements, and a counter.

Inside, there is almost 6 meters long bar in one element. Back side was made of stainless steel with wooden elements.

Finishing made of solid cherry wood, and copper elements.





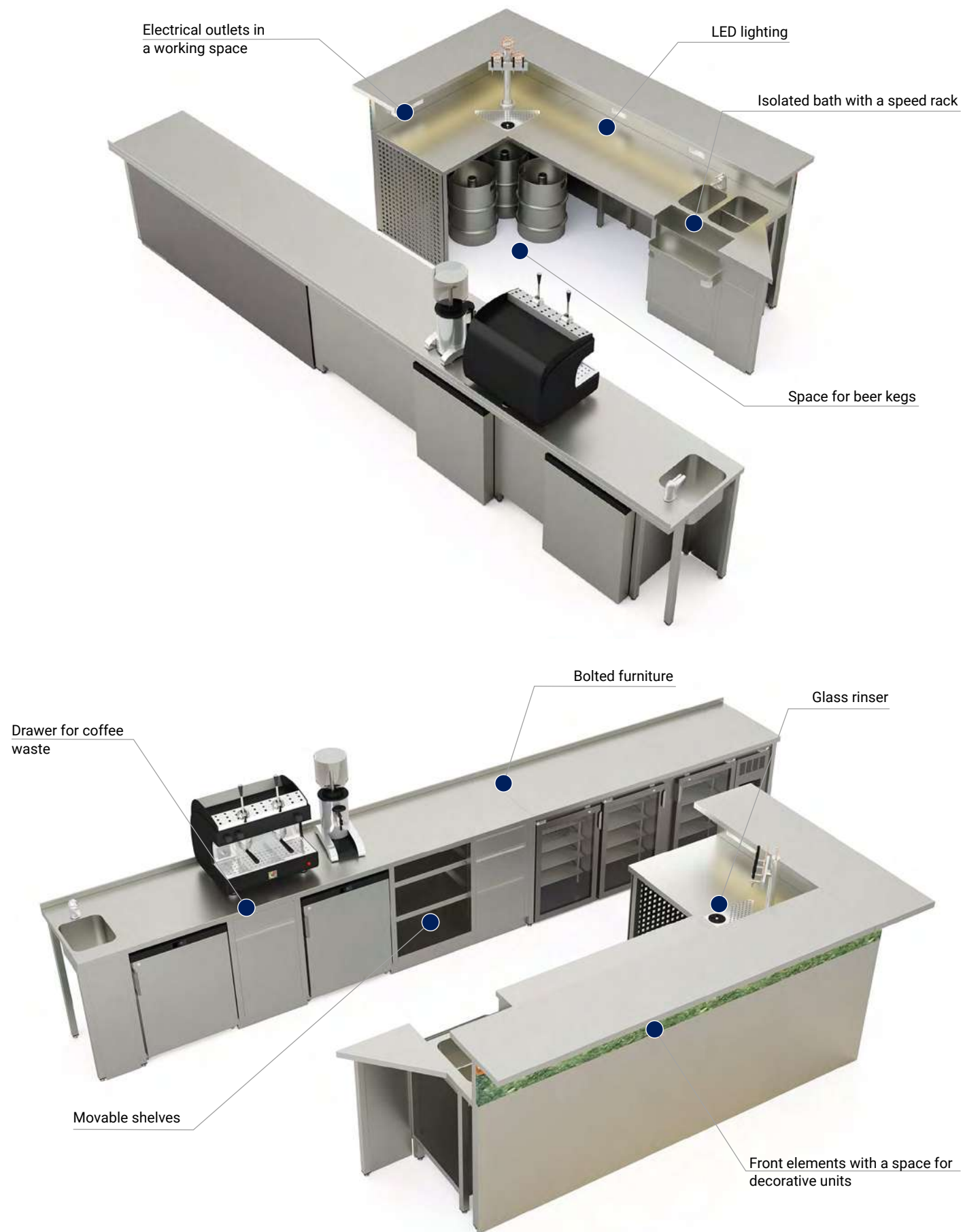
7 POKOI

A bar in a restaurant called 7 Pokoi in the Cultural Centre in Kielce.

The whole project was divided into two parts: a bar - a place where drinks, cocktails and beer are served, and a cafe - with a coffee machine, pastry counter, and a space for preparing fresh juices.

In a cafe part the furniture was made in an unusual way. The front elements of the furniture were powder coated in a green colour – a colour which is a main colour in the whole restaurant. Another interesting element of the bar, which was designed and produced by our company, is a bar glass hanger which attracts attention and gives the interior unique character.





RELAX

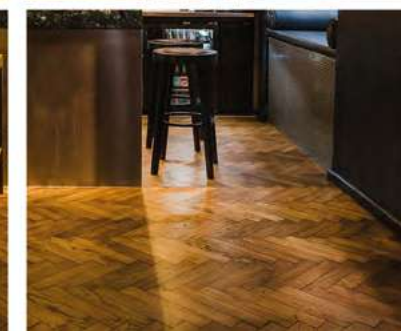
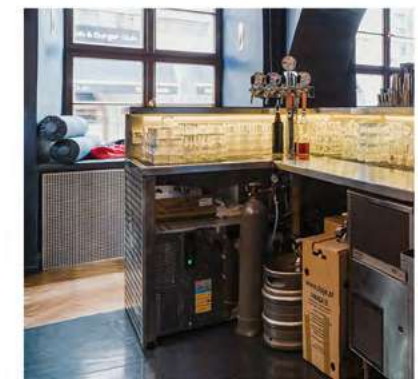
The owners of Relax café have decided to restore their place after several years of work.

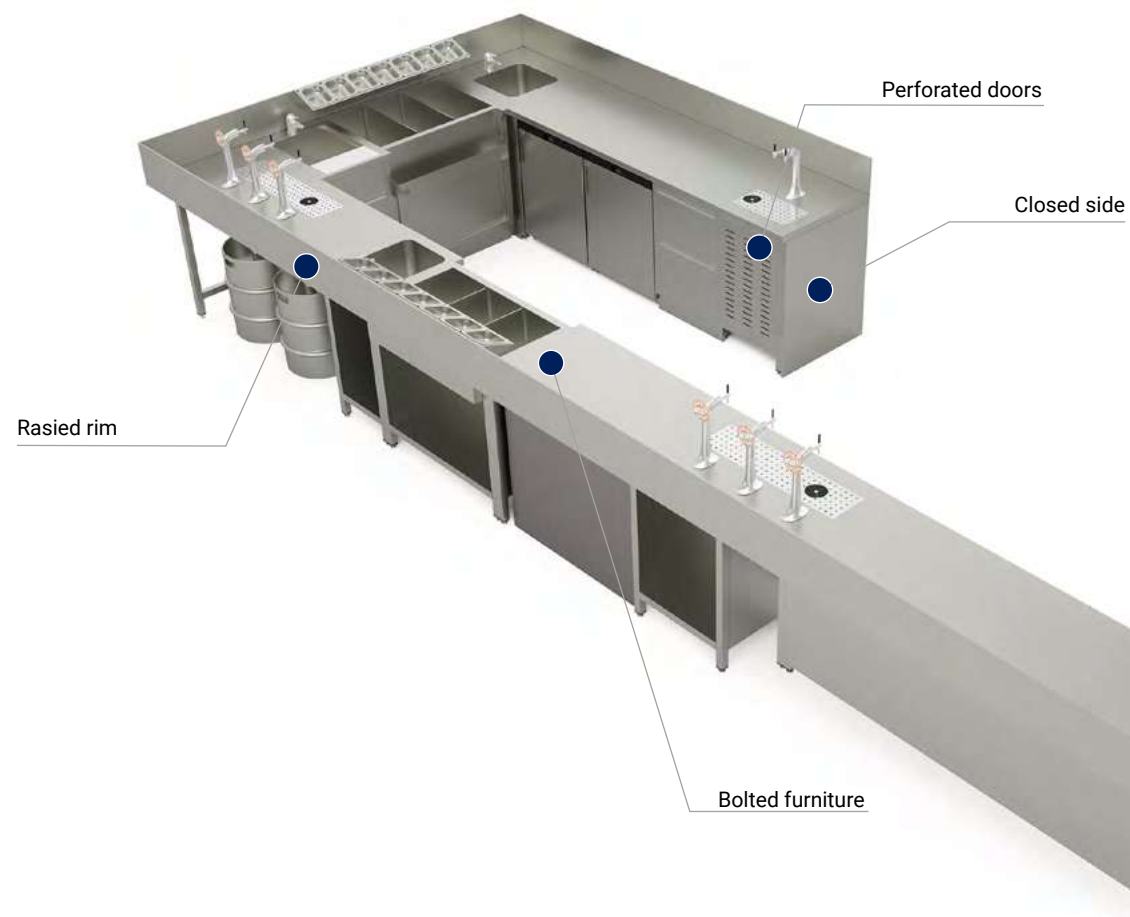
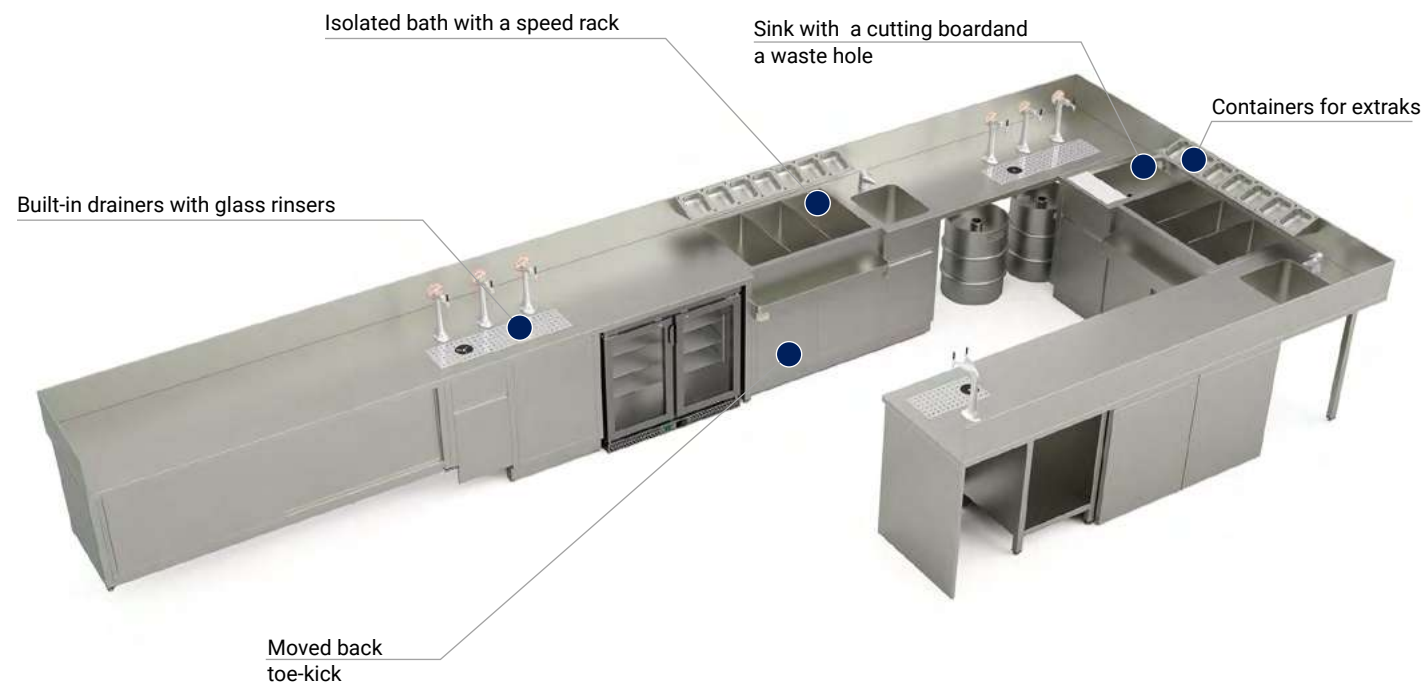
We produced a bar which is an important element of the interior design in that place.

The bar, aside from its main function, had to look wonderful and be a decorative element of the place.

A conglomerate material which was used on the back and the front part of the bar makes the whole project coherent.

The lighting also has a great importance in the project - LED lighting under the shelves as well as under a counter.





PLAC NOWY 1

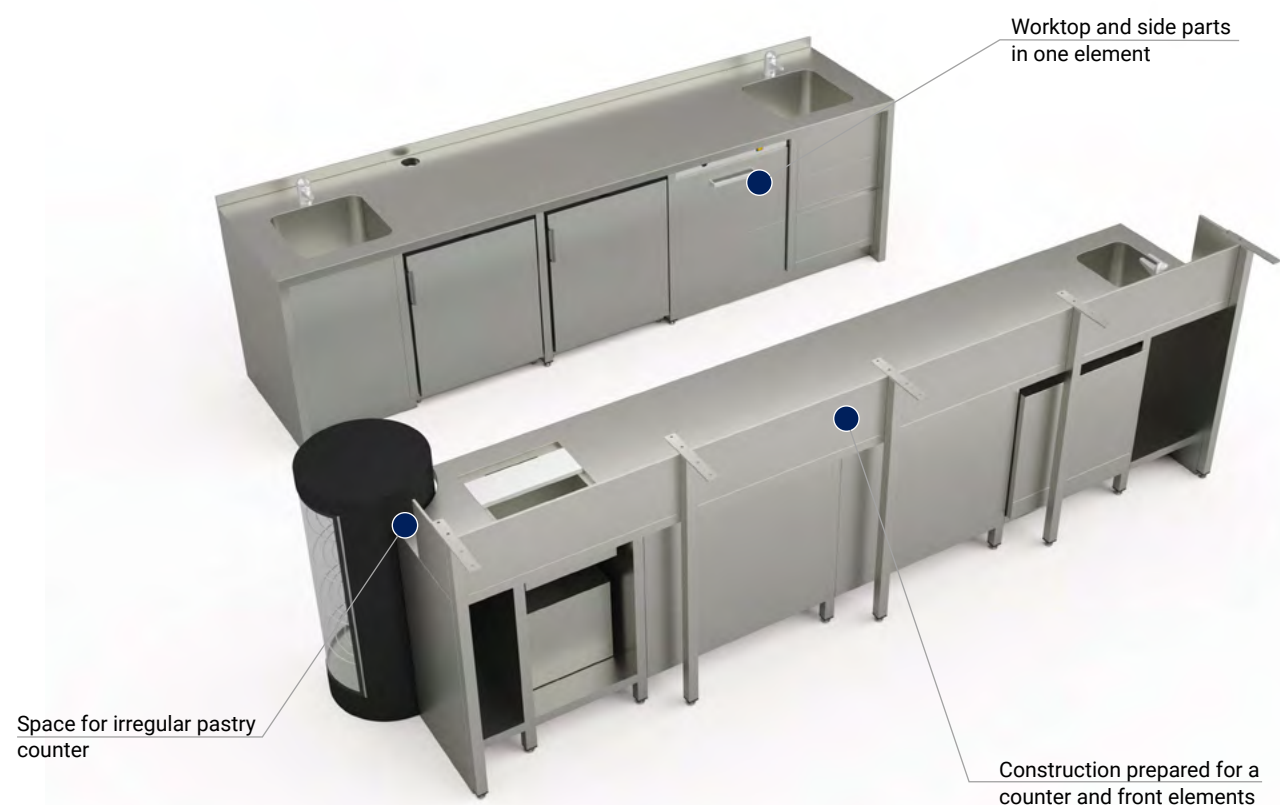
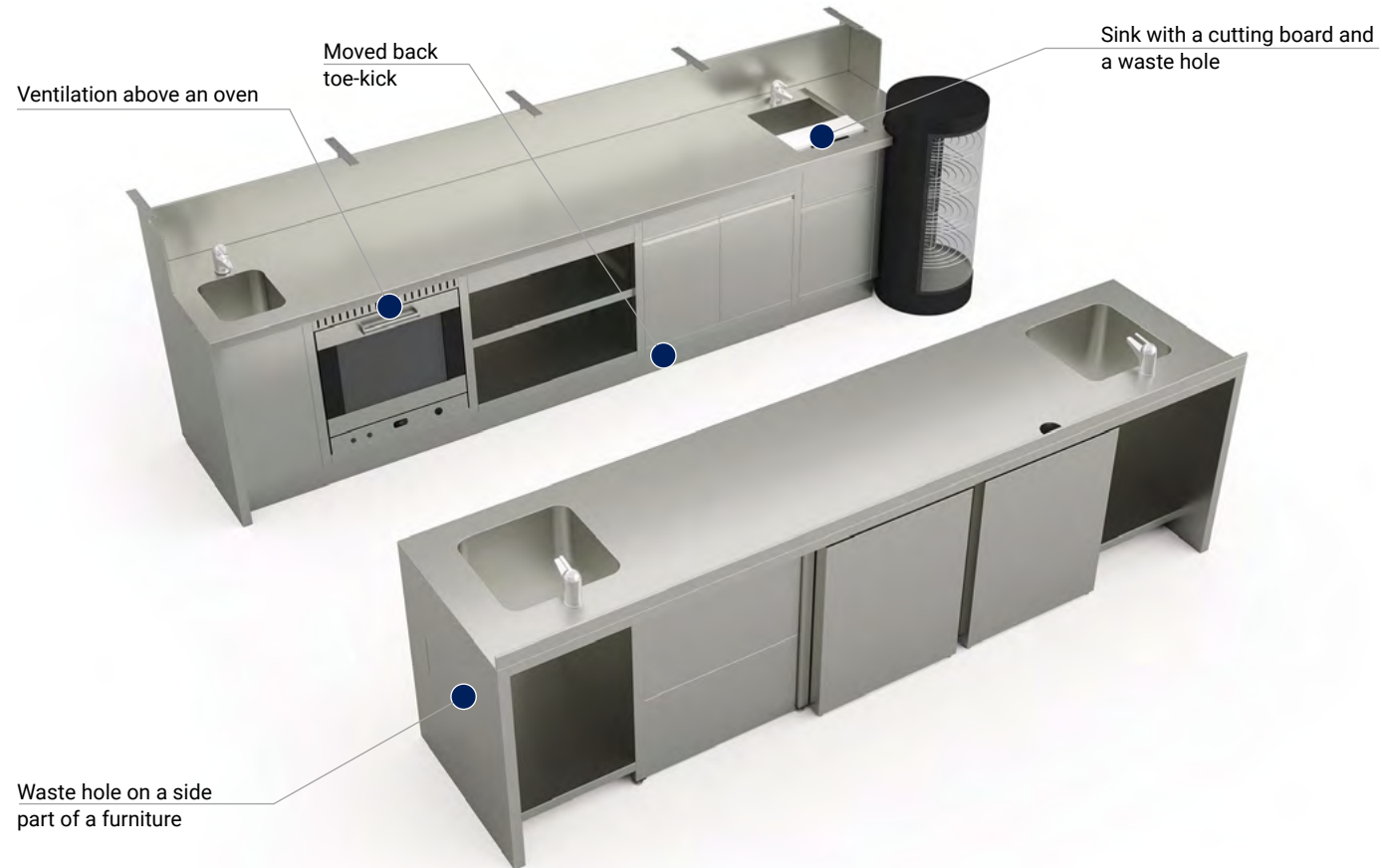
Restaurant is located in the heart of Jewish District - Kazimierz.

Raised rims, ice baths, built-in drainer with glass rinsers those are only few elements of the bar.

The bar was designed in a way it may easily serve a large number of guests especially during weekends.

Devices: JG Gastro, Liebherr, Hoshizaki, Gamko, Hobart, Asber.





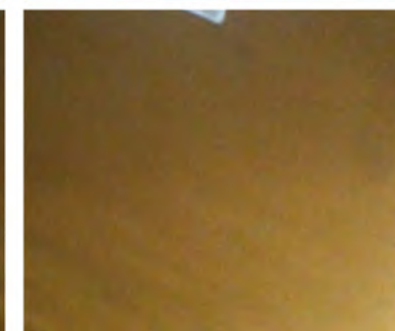
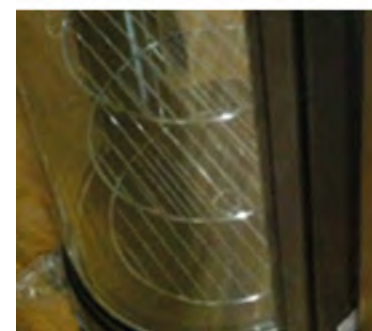
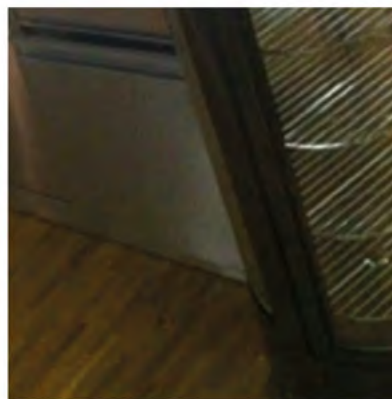
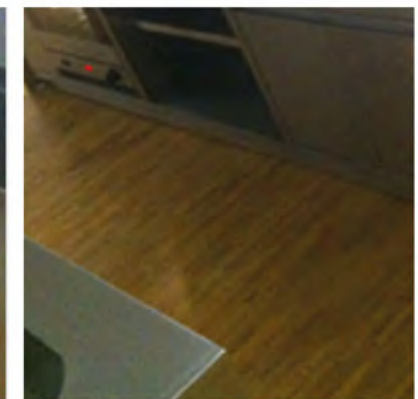
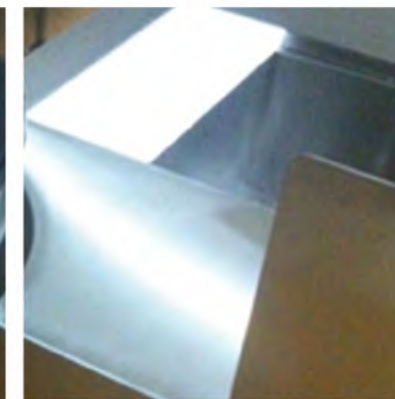
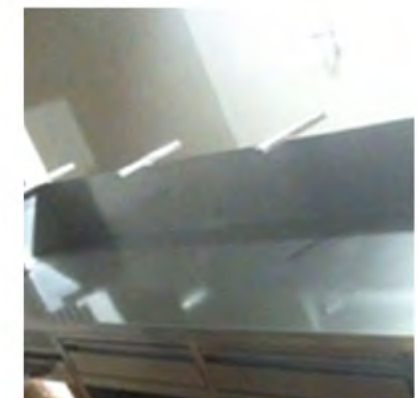
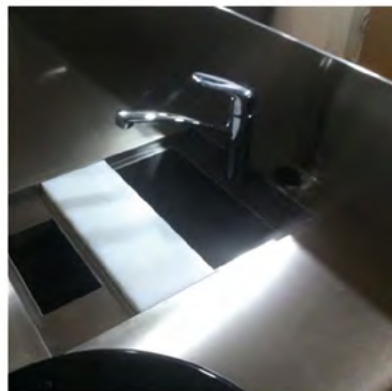
COWORKING

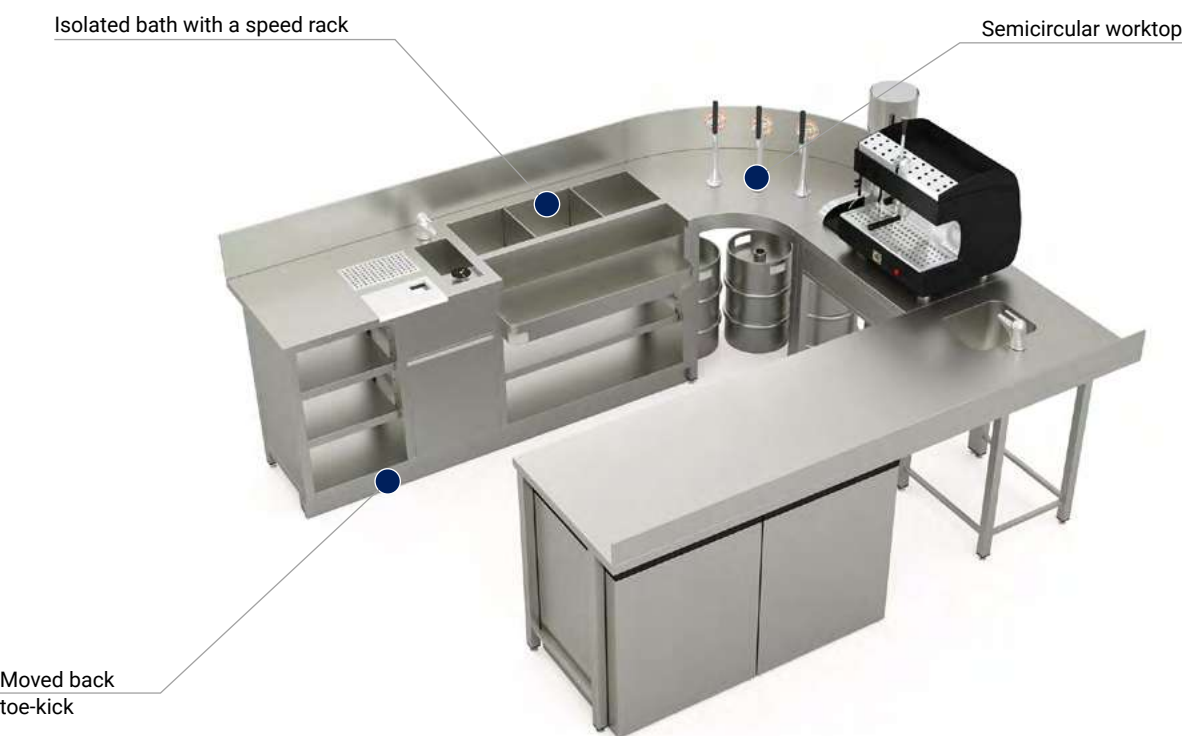
The bar is located in a coworking space.

Two huge units with worktops in one element, a built-in oven, refrigerators, a dishwasher, and a space for irregular pastry counter.

The construction of the bar was prepared for installing a counter and front elements.

What is noteworthy is that the side parts of the bar are one element with a worktop creating one complete unity.





IGGI PIZZA

A compact bar in a fashionable pizzeria in Wroclaw.

In a tiny space we were able to fit in the most important elements of a bar: cooling devices, beer kegs, a coffee machine, and a drawer for coffee waste.

A symmetrical bar construction which includes an ice bath, a double speed rack, a sink with a glass rinser, a drainer, a cutting board with a waste hote is an interesting solution which guarantees comfort and efficiently at work.

Our project includes a moved back toe-kick, a raised rim and a semi-circular side part.





JG Gastro
Al. Dygasińskiego 42/3
30-820 Kraków

+ 12 658 21 09
+ 48 887 448 836
mobile@jggastro.com

Full offer of trailers, carts and
mobile gastronomic point on
www.jggastro.com