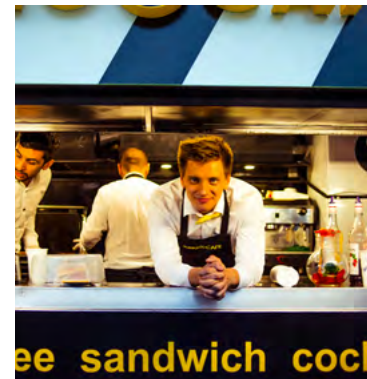


# Gastronomic trailers

Endless possibilities



GASTRO



MOBILE

## WHY CHOOSE US?

As the leader of mobile gastronomy in Poland after many years of experiences, we have prepared the two most popular lengths of a trailers with optimized equipment.

The trailers are designed to use them to most of popular food concepts on a market without big changes.

Proven devices, solutions and repeatable dimensions make us avoid mistakes and all realization is faster.

The price includes a complete trailer with furniture, cooling devices and useful elements such as advertising coffers, or folded advertising on the roof.

You only need to add devices as needed.



# Trailer without devices 3,5 m



\*demonstrative visualization

Name	Producer	Dimension (mm)	Power (kW)	Power supply (V)	Quantity (pc.)	Net price (EUR)	Net sum (EUR)
1 A cabinet with two shelves	JG Gastro	1015x700x880 h			1	650,00	650,00
2 A stainless steel on the wall	JG Gastro	1415x1500 h			1	300,00	300,00
3 A hood with filters, lighting, and a fan 1250m³/h	JG Gastro	1415x1000x500 h	0,2	230	1	1 450,00	1 450,00
4 A table with hinged doors and space for a gas cylinder	JG Gastro	400x700x880 h			1	450,00	450,00
5 A Two-door refrigerated table with an extension	JG Gastro	900x700x1040 h	0,2	230	1	1 300,00	1 300,00
6 A stainless steel cabinet with two sinks	JG Gastro	1185x700x880 h			1	1 050,00	1 050,00
7 Water installation	JG Gastro				1	750,00	750,00
8 A staff cabinet	JG Gastro	315x500x1800 h			1	120,00	120,00
9 A stainless steel table with two shelf	JG Gastro	2575x700x900 h			1	1 100,00	1 100,00
10 Refrigerated cabinet 350 l	Forcar	600x600x1850 h	0,2	230	1	1 350,00	1 350,00
11 A Trailer	JG Gastro	3500x2200x2300 h			1	6 900,00	6 900,00
12 A beech table top by the window	JG Gastro	2100x250			1	500,00	500,00
13 Folding display on the roof	JG Gastro				1	390,00	390,00
14 A Coffe	JG Gastro	550x60x1000 h			2	150,00	300,00
15 Electric installation 230 V	JG Gastro				1	890,00	890,00
16 Installing	JG Gastro				1	1 250,00	1 250,00
<b>Total net:</b>						<b>18 750,00</b>	

# Trailer for 3 devices 3,5 m



\*demonstrative visualization

Name	Producer	Dimension (mm)	Power (kW)	Power supply (V)	Quantity (pc.)	Net price (EUR)	Net sum (EUR)
1 A devices	Red Fox	330x600x290 h			3		
2 An one-tier shelf	JG Gastro	990x80x190 h			1	150,00	150,00
3 A base for devices	JG Gastro	1015x680x600 h			1	650,00	650,00
4 A wall insulation	JG Gastro	680x20x1390 h			1	300,00	300,00
5 A stainless steel on the wall	JG Gastro	1415x1500 h			1	300,00	300,00
6 A hood with filters, lighting, and a fan 1250m³/h	JG Gastro	1415x1000x500 h	0,2	230	1	1 450,00	1 450,00
7 A table with hinged doors and space for a gas cylinder	JG Gastro	400x700x880 h			1	450,00	450,00
8 A Two-door refrigerated table with an extension	JG Gastro	900x700x1040 h	0,2	230	1	1 300,00	1 300,00
9 A stainless steel cabinet with two sinks	JG Gastro	1185x700x880 h			1	1 050,00	1 050,00
10 Water installation	JG Gastro				1	750,00	750,00
11 A staff cabinet	JG Gastro	315x500x1800 h			1	120,00	120,00
12 A stainless steel table with two shelf	JG Gastro	2575x700x900 h			1	1 100,00	1 100,00
13 Refrigerated cabinet 350 l	Forcar	600x600x1850 h	0,2	230	1	1 350,00	1 350,00
14 A Trailer	JG Gastro	3500x2200x2300 h			1	6 900,00	6 900,00
15 A beech table top by the window	JG Gastro	2100x250			1	500,00	500,00
16 Folding display on the roof	JG Gastro				1	390,00	390,00
17 A Coffe	JG Gastro	550x60x1000 h			2	150,00	300,00
18 Electric installation 230 V	JG Gastro				1	890,00	890,00
19 Installing	JG Gastro				1	1 250,00	1 250,00

**Total net: 19 200,00**

# Trailer without devices 5 m



\*demonstrative visualization

Name	Producer	Dimension (mm)	Power (kW)	Power supply (V)	Quantity (pc.)	Net price (EUR)	Net sum (EUR)
1 A cabinet with two shelves	JG Gastro	1800x700x880 h			1	900,00	900,00
2 A stainless steel on the wall	JG Gastro	2200x1500 h			1	500,00	500,00
3 A hood with filters, lighting, and a fan 1250m³/h	JG Gastro	2200x1000x500 h	0,2	230	1	1 750,00	1 750,00
4 A table with hinged doors and space for a gas cylinder	JG Gastro	400x700x880 h			1	450,00	450,00
5 A Two-door refrigerated table with an extension	JG Gastro	900x700x1040 h	0,2	230	2	1 300,00	2 600,00
6 A stainless steel cabinet with two sinks	JG Gastro	1000x700x880 h			1	1 050,00	1 050,00
7 Water installation	JG Gastro				1	750,00	750,00
8 A staff cabinet	JG Gastro	315x500x1800 h			1	120,00	120,00
9 A table with a movable shelf	JG Gastro	1520x700x900 h			1	450,00	450,00
10 A stainless steel table with two shelf	JG Gastro	2575x700x900 h			1	1 100,00	1 100,00
11 Refrigerated cabinet 350 l	Forcar	600x600x1850 h	0,2	230	1	1 350,00	1 350,00
12 A Trailer	JG Gastro	5000x2200x2300 h			1	9 900,00	9 900,00
13 A beech table top by the window	JG Gastro	3500x250			1	750,00	750,00
14 Folding display on the roof	JG Gastro				1	390,00	390,00
15 A Coffe	JG Gastro	550x60x1000 h			2	150,00	300,00
16 Electric installation 230 V	JG Gastro				1	1 000,00	1 000,00
17 Installing	JG Gastro				1	1 500,00	1 500,00

**Total net: 24 860,00**

# Trailer for 3 devices 5 m



\*demonstrative visualization

Name	Producer	Dimension (mm)	Power (kW)	Power supply (V)	Quantity (pc.)	Net price (EUR)	Net sum (EUR)
1 A devices	Red Fox	330x600x290 h			3		
2 An one-tier shelf	JG Gastro	990x80x190 h			1	150,00	150,00
3 A base for devices	JG Gastro	1015x680x600 h			1	650,00	650,00
4 A wall insulation	JG Gastro	680x20x1390 h			1	300,00	300,00
5 A stainless steel on the wall	JG Gastro	1415x1500 h			1	500,00	500,00
6 A hood with filters, lighting, and a fan 1250m³/h	JG Gastro	1415x1000x500 h	0,2	230	1	1 750,00	1 750,00
7 A table with hinged doors and space for a gas cylinder	JG Gastro	400x700x880 h			1	450,00	450,00
8 A cabinet with hinged doors	JG Gastro	790x700x880 h			1	650,00	650,00
9 A Two-door refrigerated table with an extension	JG Gastro	900x700x1040 h	0,2	230	2	1 300,00	2 600,00
10 A stainless steel cabinet with two sinks	JG Gastro	1000x700x880 h			1	1 050,00	1 050,00
11 Water installation	JG Gastro				1	750,00	750,00
12 A staff cabinet	JG Gastro	315x500x1800 h			1	120,00	120,00
13 A table with a movable shelf	JG Gastro	1520x700x900 h			1	450,00	450,00
14 A stainless steel table with two shelf	JG Gastro	2575x700x900 h			1	1 100,00	1 100,00
15 Refrigerated cabinet 350 l	Forcar	600x600x1850 h	0,2	230	1	1 350,00	1 350,00
16 A Trailer	JG Gastro	5000x2200x2300 h			1	9 900,00	9 900,00
17 A beech table top by the window	JG Gastro	3500x250			1	750,00	750,00
18 Folding display on the roof	JG Gastro				1	390,00	390,00
19 A Coffe	JG Gastro	550x60x1000 h			2	150,00	300,00
20 Electric installation 230 V	JG Gastro				1	1 000,00	1 000,00
21 Installing	JG Gastro				1	1 500,00	1 500,00

**Total net: 25 710,00**



\*demonstrative visualization

	Name	Producer	Dimension (mm)	Power (kW)	Power supply (V)	Quantity (pc.)	Net price (EUR)	Net sum (EUR)
1	A devices	Red Fox	330x600x290 h			5		
2	An one-tier shelf	JG Gastro	1650x80x190 h			1	300,00	300,00
3	A base for devices	JG Gastro	1670x680x600 h			1	790,00	790,00
4	A wall insulation	JG Gastro	680x20x1390 h			1	300,00	300,00
5	A stainless steel on the wall	JG Gastro	2200x1500 h			1	500,00	500,00
6	A hood with filters, lighting, and a fan 1250m³/h	JG Gastro	2200x1000x500 h	0,2	230	1	2 050,00	2 050,00
7	A table with hinged doors and space for a gas cylinder	JG Gastro	400x700x880 h			1	450,00	450,00
8	A Two-door refrigerated table with an extension	JG Gastro	900x700x1040 h	0,2	230	2	1 300,00	2 600,00
9	A stainless steel cabinet with two sinks	JG Gastro	1000x700x880 h			1	1 050,00	1 050,00
10	Water installation	JG Gastro				1	750,00	750,00
11	A staff cabinet	JG Gastro	315x500x1800 h			1	120,00	120,00
12	A table with a movable shelf	JG Gastro	1520x700x900 h			1	450,00	450,00
13	A stainless steel table with two shelf	JG Gastro	2575x700x900 h			1	1 100,00	1 100,00
14	Refrigerated cabinet 350 l	Forcar	600x600x1850 h	0,2	230	1	1 350,00	1 350,00
15	A Trailer	JG Gastro	5000x2200x2300 h			1	9 900,00	9 900,00
16	A beech table top by the window	JG Gastro	3500x250			1	750,00	750,00
17	Folding display on the roof	JG Gastro				1	390,00	390,00
18	A Coffe	JG Gastro	550x60x1000 h			2	150,00	300,00
19	Electric installation 230 V	JG Gastro				1	1 000,00	1 000,00
20	Installing	JG Gastro				1	1 500,00	1 500,00

Total net: 25 650,00

Sale trailers made in laminated wall technology with a insulation of 25 mm (a ceiling and floor 30 mm). Walls are made of aesthetic laminate on which you may put some advertisement easily. Mechanical elements of a chassis come from certified components of German companies such as Knott, or Alko what guarantees highest quality, safety as well as long-lasting and failure-free usage. A complex construction makes a trailer hermetic. Basic equipment includes: one sales window, one front door, axle / axes with brakes, one support wheel.

Due to their capacity, our trailers may be used in trade, gastronomy, catering, and as information, medical, exhibition, social etc. points. In every place where mobility matters.

## Examples





JG Gastro  
Al. Dygasińskiego 42/3  
30-820 Kraków

+48 12 658 21 09  
+48 887 448 836  
mobile@jggastro.com

Full offer of trailers, carts and  
mobile gastronomic point on  
[www.jggastro.com](http://www.jggastro.com)