

# Gastronomic bikes

Endless possibilities



GASTRO

## WHY IT'S BETTER TO BE MOBILE?

### Street food

Changes in social life together with a trend to spend time outside give new possibilities in business development. One of them is definitely Street food. We love to eat and drink in a street. Mobile sales points become a standard element of a city scenery and an attraction not only for tourists.

### Co i dla kogo?

Coffee bike, juice and lemonade bike, ice-cream bike, panini bike, or any other gastronomic bike is a great idea for your first business. Moreover, it may be the adventure of your lifetime. It requires less financial investment, and consequently it reduces the risk of possible decrease in financial values.

Gastronomic bike as a first business is just one of our propositions. Our offer is intended also for people who are tired of working in big corporations as well as for people who are over their careers. It is great opportunity for being financially independent, working outside, enjoying fresh air and protecting the environment by using your own muscles for moving.

If you are a successful businessman and your business is running very well, a gastronomic bike will be just another tool for earning money. Using one of our gastronomic bikes, you can create both an entirely new concept or a mobile supplement of your already existing gastronomy.

However, the greatest advantage of a mobile business, which arises directly from the mobility itself, is the fact that while your initial workplace turn out to be unsuccessful, you can easily move to another place. If a customer couldn't find you, you may find him instead!



## About

### Our company



Our company has been established since 2007. We are proud of being a leader of gastronomic bikes as well as sales concepts. We offer the greatest number of mobile devices in Europe. In our offer you may find for instance a coffee bike, an ice cream bike, a juice and lemonade bike, or a hot dog bike.



### Technology

Producing our gastronomic bikes, we use the highest quality materials so our products are of the best quality, failure-free, and completed in every detail. We are not afraid of new challenges! If you have your own sales concept, don't hesitate to contact us! We will make it for you!



### Ecology

We care about ecology and that is why our company provides you with eco-friendly products. To avoid the emission of exhaust fumes, we do not use engines in our bikes. All the bikes are moving using the power of human muscles.



### Wood

Wooden boxes are made of materials which come from small, local companies with respectful approach to a processed product, and which farm sustainable cultivations. We use natural veneer with waterproof plywood which is triple painted so the material becomes weather resistant, and does not deform.



### Stainless steel

We use the highest quality stainless steel which does not corrode during operation. Moreover, we use laser cutting which guarantees production repeatability as well as absolute accuracy.



### Painting

We use powder coating technology which does not require any formula of damaging solvents. Our paints are completely safe for humans and environment as well as biodegradable. A full range of RAL colour chart gives the opportunity to fit a bike to the individual requirements of a customer.



### Power

Due to reliable mobile power technology, gastronomic bikes may work up to 48 hours. A source of power in our bikes are gel batteries which are environmentally-friendly as they do not expend dangerous emissions of sulphuric acid. Their ABS case guarantees safety during moving. Moreover, the inStainless steellation may be connected to solar panels making our bikes even more independent and eco-friendly.



### Awards and certificates

Our gastronomic bikes won the highest prize during International Food Service Trade Fair twice. Our bikes are certified by the National Hygiene Institute so they are approved for contact with food. They also obtained an approval of most of chiefs architects of the city.





It is an illustrative drawing.

Description

This bike is a base for all the other bikes. It includes a folding roof, a sink, side shelves, and a large storage cabinet.

It may be adapted to different purposes: sale of particular products, as a form of a bar, or as a tool of advertising campaigns. In order to adapt a bike to your needs, you should tell us the way it will be used, and simply choose appropriate accessories.

Gastronomic devices such as a fry top, a crepe machine, or a blender; accessories such as an advertising box, or a case instead of a carrier. At the end we select an appropriate electrical installation and a bike is ready.



It is an illustrative drawing.

Sales possibilities

- 

coffee
- 

grill
- 

pancakes
- 


lemonade
- 


information desk

Dimensions

- 1 Box (mm): 1300x800x550 h
- 2 Bike (mm): 2600x1100x2200 h
- 3 Heigh (with a folded roof) (mm): 1700 mm

Power

- 

gas
- or
- 

electricity

Variants

- 1 Wooden
- 2 RAL painted



## Strong 21" wheels

We designed strong wheels with a diameter of 68 cm which make moving around the city facile and comfortable.



## Turning radius: 4 m

A turning radius was optimised so a bike can easily cross the streets. Turning limiters are responsible for safety and guarantee stability of a bike.



## Firm bike frame painted at any colour

The double tube frame ensures stable driving as well as solidity of the whole construction. It's screwed to the front part of a bike so it can be disassemble easily during servicing or shipping. While placing an order, it is possible to choose a colour of the bike frame (RAL colour chart).



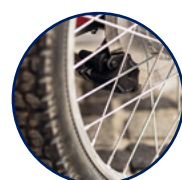
## Waterproof fabric roof

A roof is made of waterproof Cordura fabric. It is strong and resistant to mechanical damage. In order to wash the fabric, you can easily take it off from a frame. You can choose the colour of the material, and moreover we can put your company logo on it.



## Master key

You can open all the cabinets using one master key. If the key is lost, we will provide you with a new set of keys.



## Hydraulic brakes with an option of parking brake

The strongest brakes available on the market guarantee safe driving. A parking brake facilitates placing a bike while working.



## Side shelves

The side shelves improve appearance of a bike and provide an additional space for accessories. The shelves are set in a special way which guarantees stability of the products which stands on them.



## Huge pushing handle

A huge pushing handle not only looks good but also facilitates riding on a bike. The handle is made of a round stainless steel profile and it will survive even the farthest trips.



## Folding roof

A construction of a roof is made of circle profiles, and it can be folded easily. We designed strong screws to prevent from folding of a roof in an unexpected moment.



## Possibility of removing of a roof

In order to facilitate transport and storage of a bike, we designed a removing roof. Simply, you need to turn some screws, and a roof is removed. Moreover, if you get bored of a colour of a roof, you can easily replace it.



## Folding side covers

In order to make storage of a bike as easy as possible, we designed folding side covers. Simply, you need to raise one element and the covers are folded.



## Box

Make your bike unique! You can choose from three different versions: waterproof plywood, stainless steel and RAL painted.



## Stainless steel top

To increase the quality, and to improve cleanliness of work, we designed a stainless steel top which is easy to clean and resistant to mechanical damage.



## Large storage cabinet

As the only company, in such a small space we managed such a large storage space. A cabinet with a dimension of 850x760x480 h which can be opened in the front part of a bike, will hold all your products and accessories. A bottom part of a storage cabinet is perforated – it is extremely important in case of bikes with gas supply.



It is an illustrative drawing.

Description

The standard bike is the most popular configuration with additional accessories and it's the starting point for most concepts.

Equipped with a capacious chest instead of a trunk, a decorative board and an opening top at the front, it can be easily adapted to the sale of most products.

As a standard, the bike is equipped with a water and electric installation, so to adapt it to your own needs, only the devices should be added as needed.



It is an illustrative drawing.

Sales possibilities

- coffee
- grill
- pancakes
- lemonade
- information desk

Dimensions

- 1 Box (mm): 1300x800x550 h
- 2 Bike (mm): 2600x1100x2200 h
- 3 Total (mm): 3250x1100x2200 h
- 4 Heigh (with a folded roof) (mm): 1700 h

Power

- gas
- or
- electricity

Variants

- 1 Wooden
- 2 RAL painted





## Strong 21" wheels

We designed strong wheels with a diameter of 68 cm which make moving around the city facile and comfortable.



## Firm bike frame painted at any colour

The double tube frame ensures stable driving as well as solidity of the whole construction. It's screwed to the front part of a bike so it can be disassemble easily during servicing or shipping. While placing an order, it is possible to choose a colour of the bike frame (RAL colour chart).



## Turning radius: 4 m

A turning radius was optimised so a bike can easily cross the streets. Turning limiters are responsible for safety and guarantee stability of a bike.



## Box

Make your bike unique! You can choose from three different versions: waterproof plywood, stainless steel and RAL painted.



## Side shelves

The side shelves improve appearance of a bike and provide an additional space for accessories. The shelves are set in a special way which guarantees stability of the products which stands on them.



## Folding top

In front of a bike, we can put an additional folding top (55 cm) which will increase your working space over 40%. Easy opening and folding is guaranteed by the system of guideways and latches.



## Waterproof fabric roof

A roof is made of waterproof Cordura fabric. It is strong and resistant to mechanical damage. In order to wash the fabric, you can easily take it off from a frame. You can choose the colour of the material, and moreover we can put your company logo on it.



## Hydraulic brakes with an option of parking brake

The strongest brakes available on the market guarantee safe driving. A parking brake facilitates placing a bike while working.



## Huge pushing handle

A huge pushing handle not only looks good but also facilitates riding on a bike. The handle is made of a round stainless steel profile and it will survive even the farthest trips.



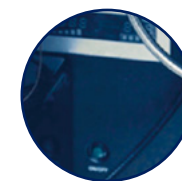
## Folding side covers

In order to make storage of a bike as easy as possible, we designed folding side covers. Simply, you need to raise one element and the covers are folded.



## Folding roof

A construction of a roof is made of circle profiles, and it can be folded easily. We designed strong screws to prevent from folding of a roof in an unexpected moment.



## Electrical installation

In our bike, we use reliable mobile power technology which consists of gel batteries, a charger, and a converter. Charging is extremely easy – all you need to do is to connect the installation to a plug using typical 230 V cable; it lasts about 6 hours. The installation includes a display on which you can check the battery level.



## Stainless steel top

To increase the quality, and to improve cleanliness of work, we designed a stainless steel top which is easy to clean and resistant to mechanical damage.



## Built-in sink

A bike includes a built-in sink in which you may wash your hands, or some accessories. It is connected with water containers which you can refill and clean easily. A dirty water container can be cleared out by a valve located under a bike.



## Storage box

To increase a storage space, you may add a box carrier to your bike. A folding cabinet with a dimension of 600x400x400 h may easily hold useful items. You can choose a colour of a box.



## Possibility of removing of a roof

In order to facilitate transport and storage of a bike, we designed a removing roof. Simply, you need to turn some screws, and a roof is removed. Moreover, if you get bored of a colour of a roof, you can easily replace it.



## Easy to refill water container

A clean water container with a capacity of 20 l is equipped with a water infusion. Inside a container we used special division which guarantees that water won't spill out during moving. Moreover, you can easily remove water containers in order to clean them.



## Master key

You can open all the cabinets using one master key. If the key is lost, we will provide you with a new set of keys.



## Large storage cabinet

As the only company, in such a small space we managed such a large storage space. A cabinet with a dimension of 850x760x480 h which can be opened in the front part of a bike, will hold all your products and accessories. A bottom part of a storage cabinet is perforated – it is extremely important in case of bikes with gas supply.



It is an illustrative drawing.

Description

A coffee bike has matched a city scenery long time ago. Classic design in combination with a unusual form of sale attracts hundreds of coffee lovers. A basic coffee bike is made of waterproof, veneered plywood, includes a 2-groups gas-electric coffee machine, a coffee grinder, a water pump, and an electrical installation.

Side shelves and cup dispensers facilitate everyday work, and a back carrier gives an additional storage space. We designed water containers as well as an electrical installation in the front part of a bike so you can access them easily. You can refill the water containers and check the battery level anytime. Charging is extremely easy – all you need to do is to connect the installation to a plug using typical 230 V cable.

While ordering you can personalise your bike by choosing a type and a colour of a box, and a colour of a frame, mudguards, and a roof.



It is an illustrative drawing.

Sales possibilities

- coffee
- drinks
- sandwich
- sweet rool
- newspaper

Dimensions

- 1 Box (mm): 1300x800x550 h
- 2 Bike (mm): 2600x1100x2200 h
- 3 Total (mm): 3250x1100x2200 h
- 4 Heigh (with a folded roof) (mm): 1700 h

Power

- gas
- or
- electricity

Variants

- 1 Wooden
- 2 RAL painted





## Strong 21" wheels

We designed strong wheels with a diameter of 68 cm which make moving around the city facile and comfortable.



## Folding top

In front of a bike, we can put an additional folding top (55 cm) which will increase your working space over 40%. Easy opening and folding is guaranteed by the system of guideways and latches.



## Firm bike frame painted at any colour

The double tube frame ensures stable driving as well as solidity of the whole construction. It's screwed to the front part of a bike so it can be disassemble easily during servicing or shipping. While placing an order, it is possible to choose a colour of the bike frame (RAL colour chart).



## Hydraulic brakes with an option of parking brake

The strongest brakes available on the market guarantee safe driving. A parking brake facilitates placing a bike while working.



## Turning radius: 4 m

A turning radius was optimised so a bike can easily cross the streets. Turning limiters are responsible for safety and guarantee stability of a bike.



## Huge pushing handle

A huge pushing handle not only looks good but also facilitates riding on a bike. The handle is made of a round stainless steel profile and it will survive even the farthest trips.



## Box

Make your bike unique! You can choose from three different versions: waterproof plywood, stainless steel and RAL painted.



## Waterproof fabric roof

A roof is made of waterproof Cordura fabric. It is strong and resistant to mechanical damage. In order to wash the fabric, you can easily take it off from a frame. You can choose the colour of the material, and moreover we can put your company logo on it.



## Side shelves

The side shelves improve appearance of a bike and provide an additional space for accessories. The shelves are set in a special way which guarantees stability of the products which stands on them.



## Folding side covers

In order to make storage of a bike as easy as possible, we designed folding side covers. Simply, you need to raise one element and the covers are folded.



## Gas coffee machine

A manual, or electrical coffee machine equipped with a gas installation and a built-in water pump. According to your needs, a coffee machine may use a gas or electrical installation during working. You simply need to push a bottom to change a power supply. You can choose from three different colours of a machine: silver, red, and black.



## Folding roof

A construction of a roof is made of circle profiles, and it can be folded easily. We designed strong screws to prevent from folding of a roof in an unexpected moment.



## Built-in sink

A bike includes a built-in sink in which you may wash your hands, or some accessories. It is connected with water containers which you can refill and clean easily. A dirty water container can be cleared out by a valve located under a bike.



## Stainless steel top

To increase the quality, and to improve cleanliness of work, we designed a stainless steel top which is easy to clean and resistant to mechanical damage.



## Easy to refill water container

In our bike, we use reliable mobile power technology which consists of gel batteries, a charger, and a converter. Charging is extremely easy – all you need to do is to connect the installation to a plug using typical 230 V cable; it lasts about 6 hours. The installation includes a display on which you can check the battery level.



## Easy to refill water container

A clean water container with a capacity of 20 l is equipped with a water infusion. Inside a container we used special division which guarantees that water won't spill out during moving. Moreover, you can easily remove water containers in order to clean them.



## Large storage cabinet

As the only company, in such a small space we managed such a large storage space. A cabinet with a dimension of 850x760x480 h which can be opened in the front part of a bike, will hold all your products and accessories. A bottom part of a storage cabinet is perforated – it is extremely important in case of bikes with gas supply.



## Optional box carrier

To increase a storage space, you may add a box carrier to your bike. A folding cabinet with a dimension of 600x400x400 h may easily hold useful items. You can choose a colour of a box.



## Possibility of removing of a roof

In order to facilitate transport and storage of a bike, we designed a removing roof. Simply, you need to turn some screws, and a roof is removed. Moreover, if you get bored of a colour of a roof, you can easily replace it.



## Master key

You can open all the cabinets using one master key. If the key is lost, we will provide you with a new set of keys.



## Bolted coffee machine

To increase safety as well as stability, a coffee machine is screwed to a top. The screws are located in a folding part under a coffee machine groups.





It is an illustrative drawing.

Description

Hot dog bike is a perfect solution while we don't have an electricity connection. It works perfectly in a street, at a festival, as well as in a shopping centre. It's made of stainless steel, and equipped with gas supply.

A strong burner situated under a bain-marie can easily maintain the desired temperature of the products. A large chamber of a bain-marie 2 x GN 2/3, 200 mm may hold sausages, buns, sweetcorn, and many more. On the side shelves, we designed special holes for extras and sauces which guarantee perfect order on the bike.

A water container with gravitational water flow is located in the top shelf.  
In a hot dog bike, we designed two huge cabinets as well as one drawer as storage cabinets.



It is an illustrative drawing.

Sales possibilities



hot dog



sweetcorn



drinks



chips

Dimensions

- 1 Box (mm): 1050x800x1150 h
- 2 Bike (mm): 2300x1200x2200 h
- 3 Total (mm): 2400x1200x2200 h

Power



gas

Variants

- 1 Stainless steel



## Strong 19" wheels

We designed strong wheels with a diameter of 60 cm which make moving around a city facile and comfortable.



## Stainless steel finishing

Our bike is made of stainless steel OH18N9 so it looks wonderful in an urban environment. It is easy to clean, and it's resistant to humidity as well as bad weather.



## Firm bike frame painted at any colour

The double tube frame ensures stable driving as well as solidity of the whole construction. It's screwed to the front part of a bike so it can be disassemble easily during servicing or shipping. While placing an order, it is possible to choose a colour of the bike frame (RAL colour chart).



## Huge pushing handle

A huge pushing handle not only looks good but also facilitates riding on a bike. The handle is made of a round stainless steel profile and it will survive even the farthest trips.



## Turning radius: 4 m

A turning radius was optimised so a bike can easily cross the streets. Turning limiters are responsible for safety and guarantee stability of a bike.



## Hydraulic brakes with an option of parking brake

The strongest brakes available on the market guarantee safe driving. A parking brake facilitates placing a bike while working.



## Containers for extras

On the side shelves of a bike, there are special holes for GN 1/9. You can adjust their height to your needs. It is a perfect space for extras.



## Space for sauces

We designed a space for three favourite sauces. It's extremely helpful as sauces do not fall out while driving. Moreover, they are always at hand and your workplace is always perfectly organised.



## Sink

We designed an useful sink in a side shelf. A water container with a gravitational water flow is located in the top shelf, so no electricity is needed. Dirty water accumulates in a bottom cabinet, so it can be clean out easily.



## Bain-marie

Its size 2 x GN 2/3 can easily contains buns and sausages. Covered with a special lid, it will keep a desired temperature. The bain-marie is heated by a gas burner so a bike is completely independent from electricity.



## Shelf for prepared hot dogs

In order to facilitate your customer service, we prepared a special place where you can put your hot dogs.



## Large storage cabinet

In a hot dog bike we designed two huge cabinets where you can storage your products for a whole workday. In a bottom part of a bike you can put buns, sausages, and extras; and in an upper part you can put beverage cans.



## Master key

You can open all the cabinets using one master key. If the key is lost, we will provide you with a new set of keys.



## Handle for tongs

Cooking accessories is an important issue. In our bike, we care about every detail, so we designed a special handle for tongs.





It is an illustrative drawing.

Description

Do you know anyone who doesn't like ice creams? We don't think so... With our ice cream bike you may reach your customers without opening an ice-cream shop.

A park, a beach, a festival, an event etc. are perfect circumstances for an ice cream bike. Classic look, a boat-shaped box, and a simple, but elegant roof make the bike unique and spectacular. Our mobile power system guarantees a possibility of working all day without necessity of connection to an electrical network.

Our ice cream bike may be equipped with 7 pozzetti, 7 litres each, so you may sell about 420 portions, two balls of ice cream each, from one loading. A built-in fan together with increased cooling capacity guarantee a constant temperature. Ice cream bike is equipped with a sink in which you can wash your hands as well as scoops.

At the back part of a bike, we designed a voluminous box in which you can storage ice cream waffles or ice cream cups for the whole workday.



It is an illustrative drawing.

Sales possibilities



ice cream

Dimensions

- 1 Box (mm): 1800x800x690 h
- 2 Bike (mm): 3100x1050x2200 h
- 3 Total (mm): 3200x1050x2200h
- 4 Heigh (with a folded roof) (mm): 1700 h

Power



electricity

Variants

- 1 RAL painted



## Strong 21" wheels

We designed strong wheels with a diameter of 68 cm which make moving around the city facile and comfortable.



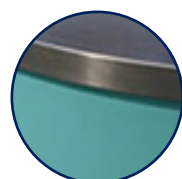
## Firm bike frame painted at any colour

The double tube frame ensures stable driving as well as solidity of the whole construction. It's screwed to the front part of a bike so it can be disassemble easily during servicing or shipping. While placing an order, it is possible to choose a colour of the bike frame (RAL colour chart).



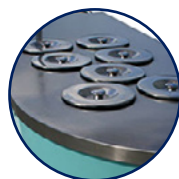
## Turning radius: 4 m

A turning radius was optimised so a bike can easily cross the streets. Turning limiters are responsible for safety and guarantee stability of a bike.



## Stainless steel box

To make your bike unique, we may paint it with any colour (RAL colour chart). Moreover, you can choose a different colour for a box and for a frame – it will be more interesting!



## Ice cream display for 7 pozzetti

A built-in freezing device with 7 pozzetti, 7 litres each, and retro style lids. Inside a display, there is a fan (12 V). Temperature control between -12°C and -21°C. Due to the construction of a bike, there is no additional storage under the upper pozzetti.



## Huge pushing handle

A huge pushing handle not only looks good but also facilitates riding on a bike. The handle is made of a round stainless steel profile and it will survive even the farthest trips.



## Hydraulic brakes with an option of parking brake

The strongest brakes available on the market guarantee safe driving. A parking brake facilitates placing a bike while working.



## Waterproof fabric roof

A roof is made of waterproof Cordura fabric. It is strong and resistant to mechanical damage. In order to wash the fabric, you can easily take it off from a frame. You can choose the colour of the material, and moreover we can put your company logo on it.



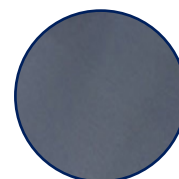
## Built-in sink

A bike includes a built-in sink in which you may wash your hands, or some accessories. It is connected with water containers which you can refill and clean easily. A dirty water container can be cleared out by a valve located under a bike.



## Optional box carrier

To increase a storage space, you may add a box carrier to your bike. A folding cabinet with a dimension of 600x400x400 h may easily hold useful items. You can choose a colour of a box.



## Stainless steel top

To increase the quality, and to improve cleanliness of work, we designed a stainless steel top which is easy to clean and resistant to mechanical damage.



## Easy to refill water container

A clean water container with a capacity of 20 l is equipped with a water infusion. Inside a container we used special division which guarantees that water won't spill out during moving. Moreover, you can easily remove water containers in order to clean them.



## Unique design

We guarantee that a boat-shaped box will attract customers. Laser cutting and perfect details makes your bike outstanding.



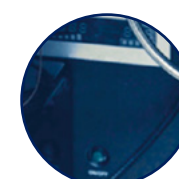
## Drain

To facilitate defrosting of a display, we designed a special drain which is located in a bottom part of a bike. You just need to turn a display off to defrost the ice which will go out through a drain.



## Master key

You can open all the cabinets using one master key. If the key is lost, we will provide you with a new set of keys.



## Easy to refill water container

In our bike, we use reliable mobile power technology which consists of gel batteries, a charger, and a converter. Charging is extremely easy – all you need to do is to connect the installation to a plug using typical 230 V cable; it lasts about 6 hours. The installation includes a display on which you can check the battery level.





It is an illustrative drawing.


Description


A cargo bike becomes more and more popular way of transportation. Bikes for transporting small goods are used both in private life and in business. Using a cargo bike we can easily bring our shopping bags, deliver a package to a customer, transport stuff to our mobile gastronomy point, or carry our beloved dog which will certainly like this form of travel.


A box of a bike may be produced in different size and material. A bike frame may be painted at any colour from RAL colour chart. You can add an option box carrier to increase a storage space of a bike.


What makes our bike unique? The appearance, the largest carrying capacity, the possibility of customising of a bike.

Sales possibilities

- 

transportation of food products
- 

transportation of packages
- 

transportation of dogs
- 

a promotional stand

Dimensions

- 1 Box (mm): 1200x700x550 h
- 2 Bike (mm): 2420x1000x900 h

Variants

- 1 Wooden



Strong 21" wheels

We designed strong wheels with a diameter of 68 cm which make moving around the city facile and comfortable.



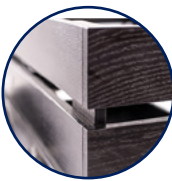
Firm bike frame painted at any colour

The double tube frame ensures stable driving as well as solidity of the whole construction. It's screwed to the front part of a bike so it can be disassemble easily during servicing or shipping. While placing an order, it is possible to choose a colour of the bike frame (RAL colour chart).



Turning radius: 4 m

A turning radius was optimised so a bike can easily cross the streets. Turning limiters are responsible for safety and guarantee stability of a bike.



Box

Made of wood, it is durable and adds charm to the bike. The stylish chest looks beautiful as a whole.



Optional box carrier

To increase a storage space, you may add a box carrier to your bike. A folding cabinet with a dimension of 600x400x400 h may easily hold useful items. You can choose a colour of a box.



Huge pushing handle

A huge pushing handle not only looks good but also facilitates riding on a bike. The handle is made of a round stainless steel profile and it will survive even the farthest trips.



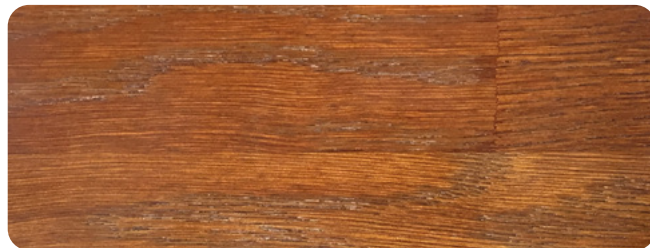
Hydraulic brakes with an option of parking brake

The strongest brakes available on the market guarantee safe driving. A parking brake facilitates placing a bike while working.

## Colours of wood

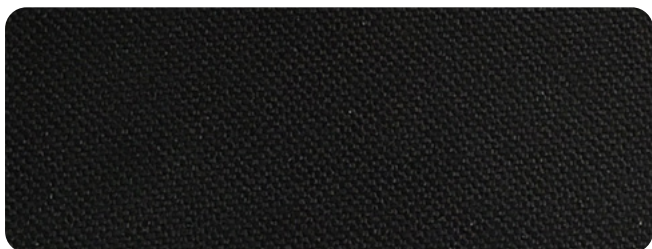


**Mahogany**

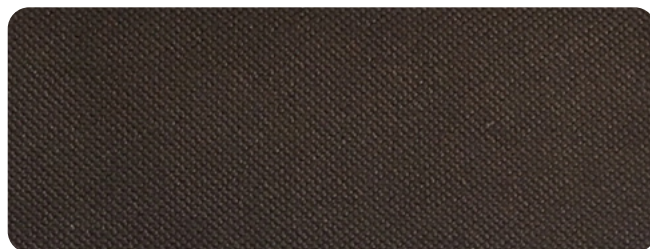


**Brown**

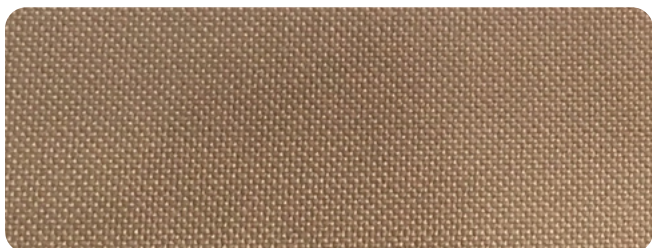
## Colours of material roof



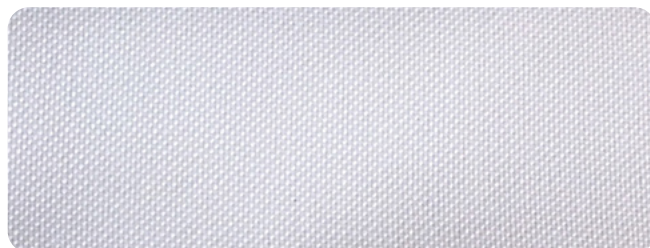
**Black**



**Brown**



**Cappuccino**



**White**



## Power supply – how does it work?

Due to reliable mobile power technology, gastronomic bikes may work up to 48 hours. A source of power for our bikes are gel batteries which are environmentally-friendly as they do not expend dangerous emissions of sulphuric acid. Their ABS case guarantees safety during moving. The installation includes battery, converter and external charger. Charging time is approximately 6 hours. The installation includes a display on which you can check the battery level. Do not overcharge the devices. Overtaking the average parameters may cause damages in a converter. Do not discharge the battery completely as it may impact its durability.

## What is a carrying capacity of a bike?

Total permitted weight including a person, devices, and products is 500 kg.

## It is possible to order a bike from which I can sell ice creams, coffee, juices and sandwiches at the same time?

Such an extensive sales profile is not possible while considering a gastronomic bike. Because of a limited space available on a bike, you need to define a product you will sell. It is necessary to reach a compromise between accessories (appropriate devices), size (to be mobile it can't be too big), storage cabinets (selling too many products, there won't be enough space to storage them), and electronical installation (size of a battery, and gas cylinder). Therefore, we recommend to consider a product you would like to sell from a bike.

## Can I ride on a gastronomic bike comfortably?

On a flat surface you can ride on a bike comfortably. You need to be careful on bumpy roads, as well as on kerbs. Overcoming long distance may be burdensome because of the weight of a bike. If a place where you storage a bike is located far from a sale place, we recommend electric engine or to transport a bike by car or trailer.

## How can I order a bike?

You need to choose a bike, accessories, and a colour of a bike. We prepare a technical drawing with a description to make sure everything is clear. If necessary, we can make a visualisation which costs 300 PLN net.

While placing an order, you need to pay 50% of the total amount as a advanced payment. The other 50% need to be paid before delivery of a bike. A bike may be shipped while to total amount was paid.

If it is possible, we recommend you to come and check a bike before shipment.

## Are the price and a payment method negotiable?

The price should be set individually with your local distributor. Special discounts are available from 3 bikes purchased one-time. While ordering one bike, the price is constant.

A production of a bike takes 5-6 weeks. Sometimes, it is possible to produce a bike a little bit faster - it depends on the quantity of orders on our production.

A bike may be produced faster than 5-6 weeks, however, for our company a deadline is 5-6 weeks.

In case of busy time on production, the term may be extended, and we always inform about it.

5-6 weeks is out time to produce a bike. You should remember that while a bike is ready and, for example, we will receive your payment few days later, a load time will be longer.

## Is a shipment included?

No. The service is provided by an external company. Please note that we are not responsible for the delivery time.

To protect a bike during delivery, we put it in a special box.



We designed a special curtains made of cordura which give a protection against rain. It includes two side elements which may be folded up easily. Moreover, you can put your logo or advertisement on the curtains.



- Standard equipment:**
- Dimensions (mm) 4680x2020x235 h
  - Weight 510 kg
  - Entry ramp on the actuators
  - 4 handles in the floor to fix the bike



Name	Variants	Number of axles and Capacity	Package dimensions (mm)
1 Trailer for trantsporting bicycles	Reinforced plastic glass fiber	1 braked axle 790 kg	339x151x185 h





JG Gastro  
Al. Dygasińskiego 42/3  
30-820 Kraków

+48 12 658 21 09  
+48 887 448 836  
mobile@jggastro.com

Full offer of trailers, carts and  
mobile gastronomic point on  
[www.jggastro.com](http://www.jggastro.com)