



Inspiring  
innovation  
and creativity



# PROMO BIKE

WORK WHEN AND WHERE YOU WANT





QUALITY AND ERGONOMICS  
DEVELOPED OVER THE YEARS



## PROMO BIKE



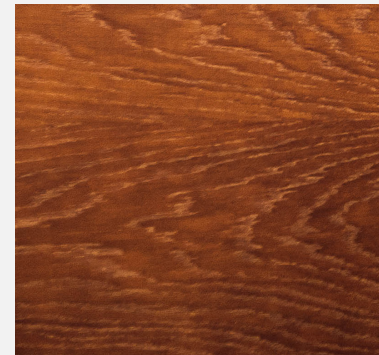
## ABOUT JG GASTRO

Our company has been established since 2007. We are proud of being a leader of gastronomic bikes as well as sales concepts. We offer the greatest number of mobile devices in Europe. In our offer you may find for instance a coffee bike, an ice cream bike or a hot dog bike.

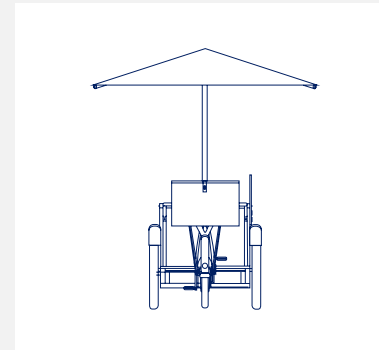
## 6 | HIGHLIGHTS



## 11 | COLORS



## 13 | TECHNICAL DATA



## 7 | FEATURES



## 12 | ACCESSORIES



## 14 | FAQ







MULTI-FUNCTIONALITY  
BASED ON EXPERIENCE



A black cargo bicycle is parked on a paved sidewalk. It features a large black umbrella mounted on its frame, a black delivery box on the back, and a clear plastic windshield. The bicycle has three wheels and a sturdy metal frame. In the background, a modern building with prominent orange vertical slats and large glass windows is visible. The scene is captured in a cinematic style with soft lighting.

BUSINESS CONCEPT  
THAT GENERATES PROFITS





**Promo Bike is a perfect solution for promotion, as an information stand or as a base for sale any products.**

Works great in shopping malls, city centers, on events or in front of a shop or restaurant. Its biggest advantages are mobility, multifunctionality, modern look and irreproachable eye-catching performance.





#### FIRM BIKE FRAME

The double tube frame ensures stable driving as well as solidity of the whole construction. It's screwed to the front part of a bike so it can be disassemble easily during servicing or shipping. While placing an order, it is possible to choose a color of the bike frame (RAL color chart).



#### STRONG 21" WHEELS

We designed strong wheels with a diameter of 60 cm which make moving around a city facile and comfortable.



#### HUGE PUSHING HANDLE

A huge pushing handle not only looks good but also facilitates riding on a bike. The handle is made of a round stainless steel profile and it will survive even the farthest trips.



#### TURNING RADIUS: 4 M

A turning radius was optimized so a bike can easily cross the streets. Turning limiters are responsible for safety and guarantee stability of a bike.



#### HYDRAULIC BRAKES WITH AN OPTION OF PARKING BRAKE

The strongest brakes available on the market guarantee safe driving. A parking brake facilitates placing a bike while working.





### BOX

Make your bike unique! You can choose from two different versions: waterproof plywood or RAL painted.



### FOLDING TOP

At the front of the bike, we place an additional fold-out table top (55 cm), which increases the space of the space by more than 40%. Easy to unfold and fold the security system and latches.



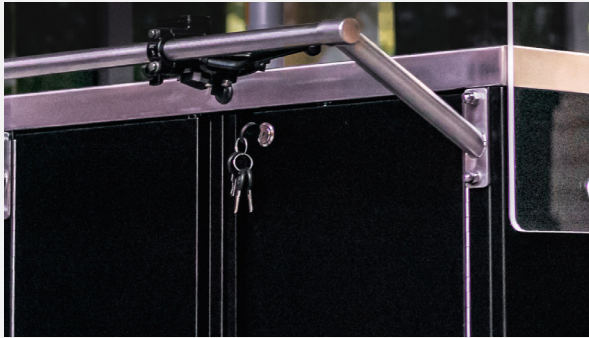
### STORAGE BOX

To increase a storage space, we add a box carrier to your bike. A folding cabinet with a dimension of 600x400x400 h may easily hold useful items.



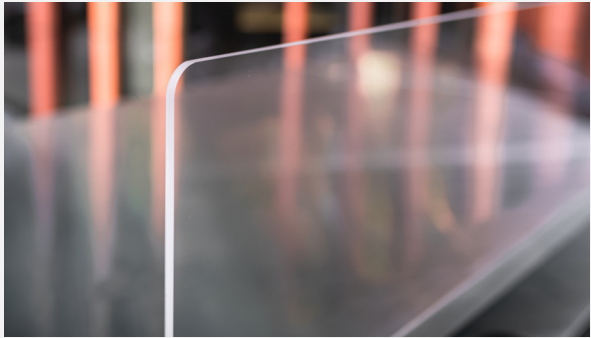
### STAINLESS STEEL TOP

To increase the quality, and to improve cleanliness of work, we designed a stainless steel top which is easy to clean and resistant to mechanical damage.



### MASTER KEY

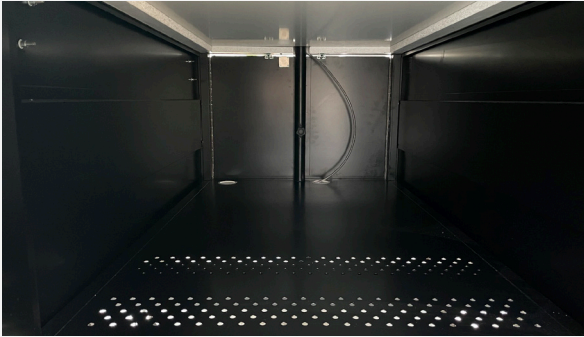
You can open all the cabinets using one master key. If the key is lost, we will provide you with a new set of keys.



### SEPARATING PLEXIGLAS

Promo Bike in standard is equipped with transparent plexiglass for separation workspace from clients. It's also a perfect space for branding or placement for important information for the client





### LARGE STORAGE CABINET

As the only company, in such a small space we managed such large storage space. A cabinet with a dimension of 700x760x480 h which can be opened in the front part of a bike, will hold all your products and accessories. A bottom part of a storage cabinet is perforated - it is extremely important in case of bike with gas supply.



### UMBRELLA

The bicycle is equipped with a large umbrella of dimensions (mm) 3000x2000 that gives the operator protection from the sun and can be used as an advertising space. A solid pipe is placed in the hole in the table top and its stabilized inside of the cabinet with screws to hold umbrella in its position.



## COLORS OF WOOD



MAHOGANY



BROWN

## COLORS OF STEEL BOX



RAL PALETTE

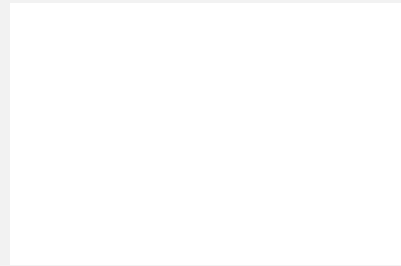
## COLORS OF UMBRELLA



BEIGE

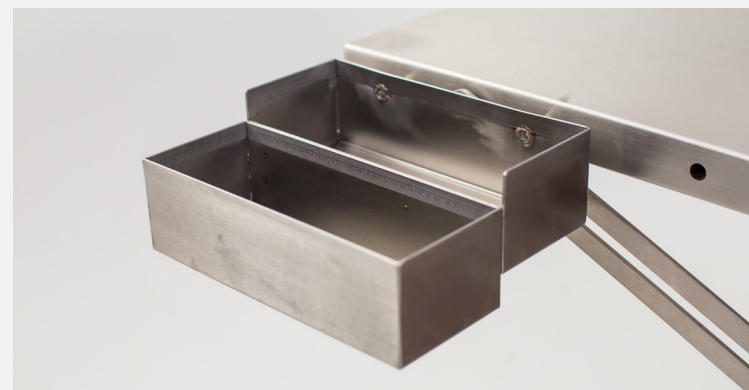


GRAY



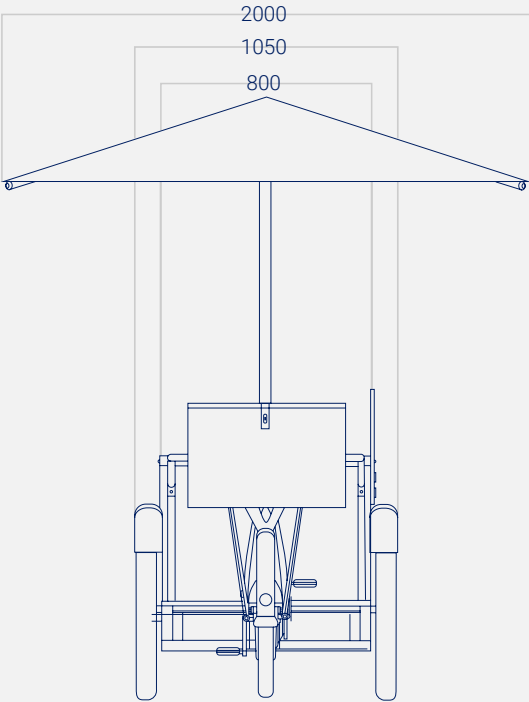
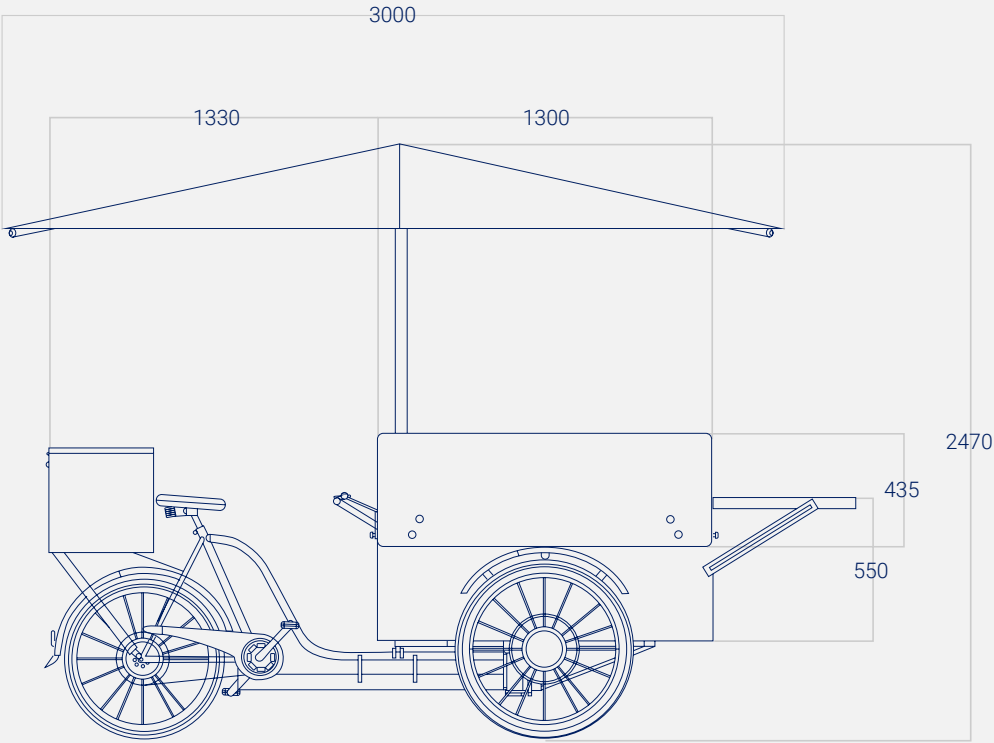
WHITE





DISCOVER THE FULL RANGE OF  
ACCESSORIES IN THE DEDICATED CATALOGUE





**Total dimensions (mm):**

3000 x 2000 x 2470h

**Worktop dimensions (mm):**

1300 x 800 + 550 x 800

**Space in the storage box (mm):**

700 x 760 x 480h

**Space in the rear storage box (mm):**

360x560x360h

**Weight (kg):**

155kg

**Drive type:**

fixed-gear bicycle

**Electric drive:**

optional

**Brake type:**

hydraulic with parking option

**Table top material:**

stainless steel

**Box material:**

stainless steel

**Roof type:**

umbrella

**Front wheel size: 21"**

**Rear wheel size: 20"**



**POWER SUPPLY – HOW DOES IT WORK?**

Due to reliable mobile power technology, gastronomic bikes may work up to 48 hours. A source of power for our bikes are gel batteries which are environmentally-friendly as they do not expend dangerous emissions of sulphuric acid. Their ABS case guarantees safety during moving. The installation includes battery, converter and external charger. Charging time is approximately 6 hours. The installation includes a display on which you can check the battery level. Do not overcharge the devices. Overtaking the average parameters may cause damages in a converter. Do not discharge the battery completely as it may impact its durability.

**WHAT IS A CARRYING CAPACITY OF A BIKE?**

Total permitted weight including a person, devices, and products is 500 kg.

**IT IS POSSIBLE TO ORDER A BIKE FROM WHICH I CAN SELL ICE CREAMS, COFFEE, JUICES AND SANDWICHES AT THE SAME TIME?**

Such an extensive sales profile is not possible while considering a gastronomic bike. Because of a limited space available on a bike, you need to define a product you will sell. It is necessary to reach a compromise between accessories (appropriate devices), size (to be mobile it can't be too big), storage cabinets (selling too many products, there won't be enough space to storage them), and electric installation (size of a battery, and gas cylinder). Therefore, we recommend to consider a product you would like to sell from a bike.

**CAN I RIDE ON A GASTRONOMIC BIKE COMFORTABLY?**

On a flat surface you can ride on a bike comfortably. You need to be careful on bumpy roads, as well as on kerbs. Overcoming long distance may be burdensome because of the weight of a bike. If a place where you storage a bike is located far from a sale place, we recommend electric engine or to transport a bike by car or trailer.

**HOW CAN I ORDER A BIKE?**

You need to choose a bike, accessories, and a colour of a bike. We prepare a technical drawing with a description to make sure everything is clear. If necessary, we can make a visualisation which costs 300 PLN net.

While placing an order, you need to pay 50% of the total amount as a advanced payment. The other 50% need to be paid before delivery of a bike. A bike may be shipped while to total amount was paid. If it is possible, we recommend you to come and check a bike before shipment.



**ARE THE PRICE AND A PAYMENT METHOD  
NEGOTIABLE?**

The price should be set individually with your local distributor. Special discounts are available from 3 bikes purchased one-time. While ordering one bike, the price is constant.

A production of a bike takes 5-6 weeks. Sometimes, it is possible to produce a bike a little bit faster - it depends on the quantity of orders on our production. In case of busy time on production, the term may be extended, and we always inform about it. You should remember that while a bike is ready and, for example, we will receive your payment few days later, a load time will be longer.

**IS A SHIPMENT INCLUDED?**

No. The service is provided by an external company. Please note that we are not responsible for the delivery time.





## CONTACT US



**+48 887 448 834**



**info@gastro-bike.com**



**al. Dygasińskiego 42/3,  
30-820 Kraków**



**JG GASTRO**



**facebook.com/Gastro-Bikecom**



**@gastro\_bike**



**www.gastro-bike.com**